



B+

RARE & NEEDED TYPE



9%
of the
population

Your blood type is an important type for treating people with Sickle Cell Disease.



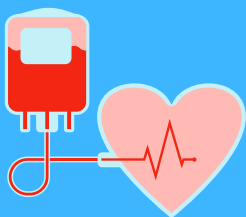
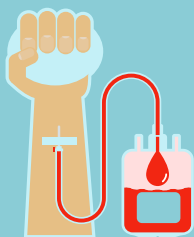
PREFERRED DONATION METHODS

- Double Red Blood Cell
- Whole Blood
- Platelet

Will you give?

Positive types of B and AB can receive your red cells.

Types B and O can receive your plasma.



FOR YOU

You can receive types B and O both positive and negative.

To schedule or find a blood drive near you, visit TheBloodCenter.org or call (800)86-BLOOD



THE BLOOD CENTER

Serving you for life!